



# Morecambe Offshore Windfarm: Generation Assets Environmental Statement

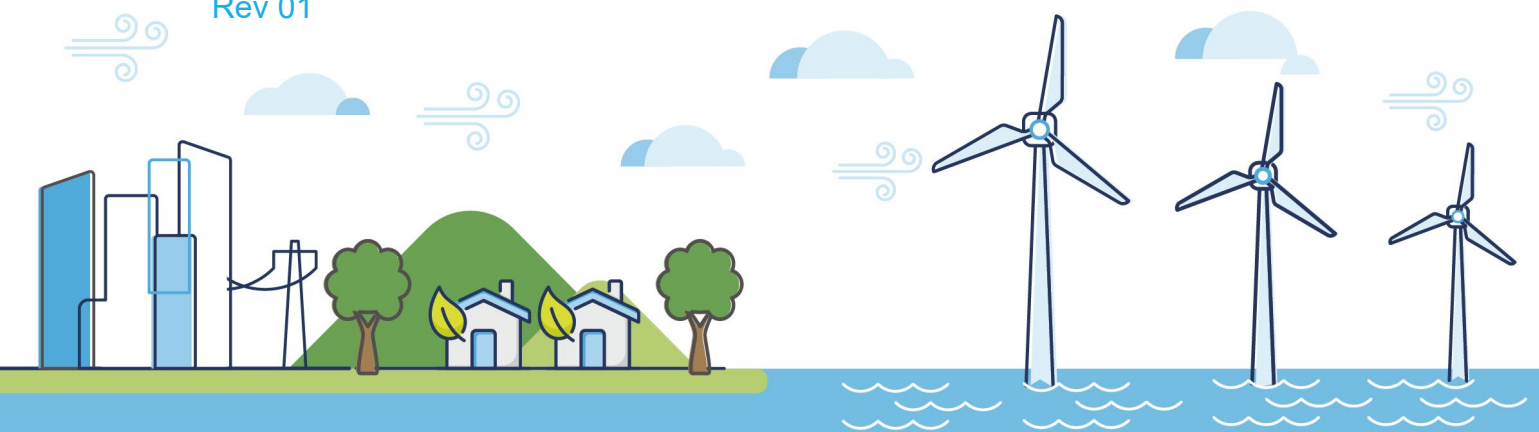
## Volume 5

### Chapter 18 SLVIA Figures (Part 8 of 34)

PINS Document Reference: 5.3.18.8

APFP Regulation: 5(2)(a)

Rev 01

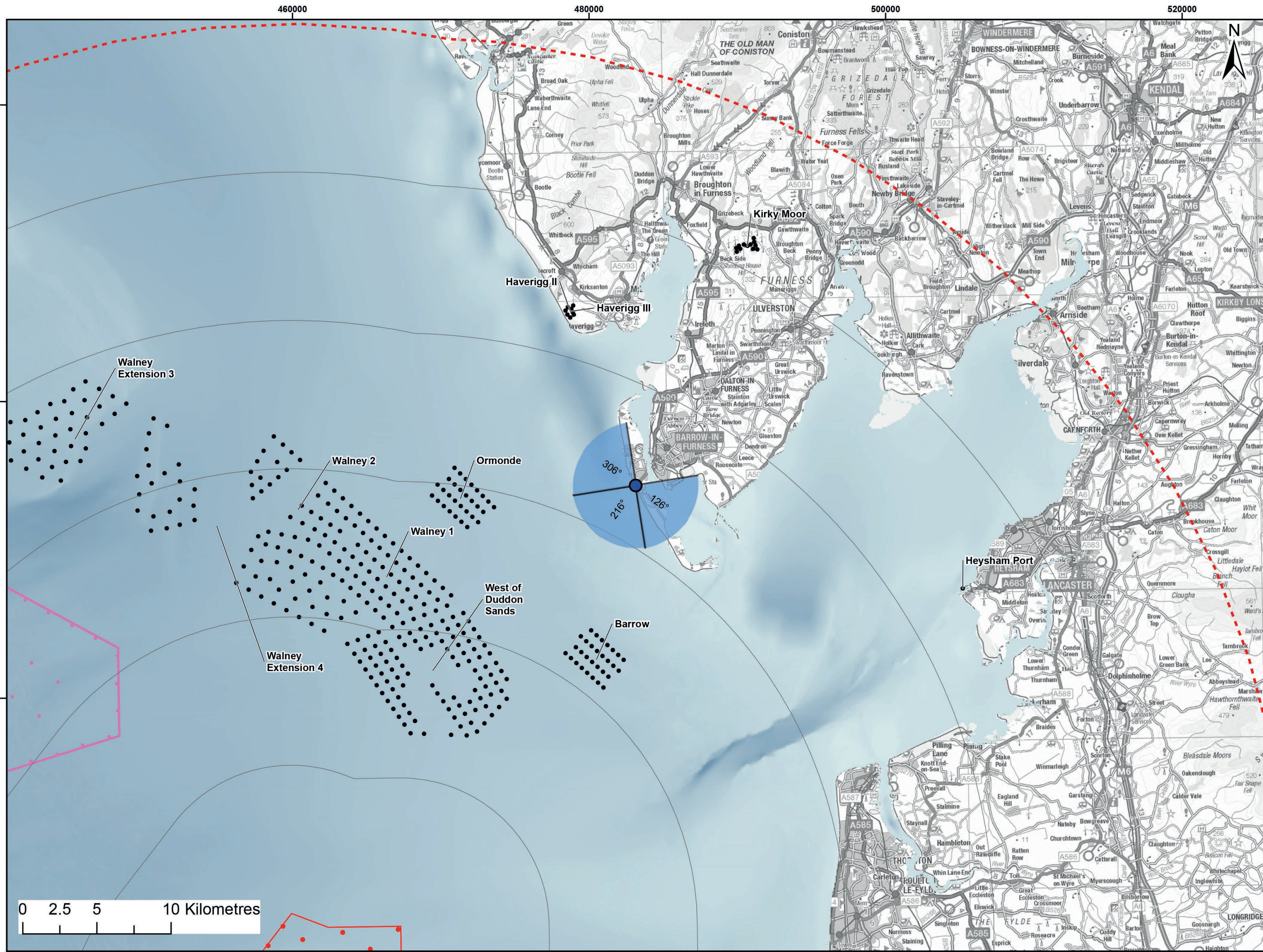


## Document History

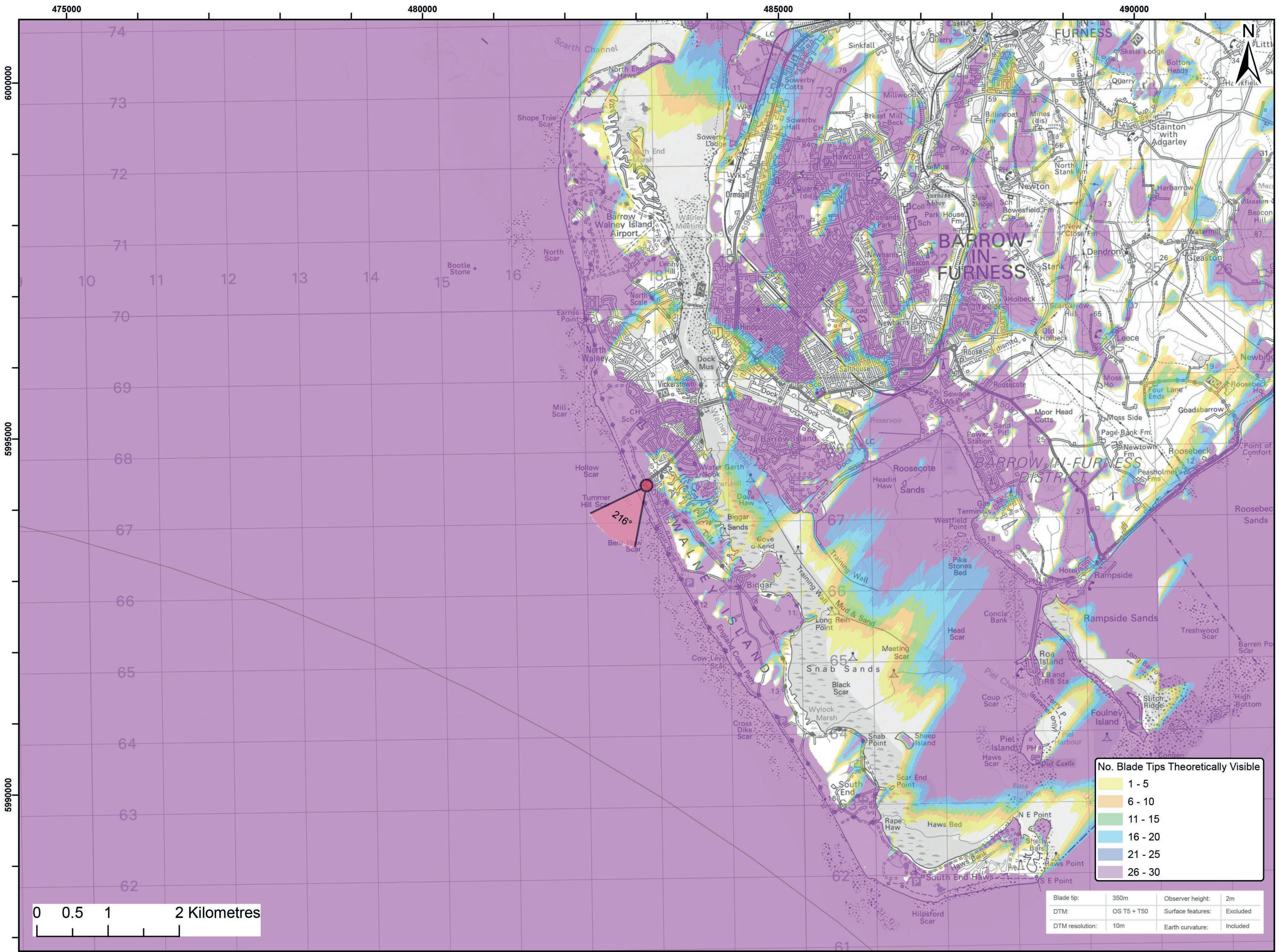
<b>Doc No</b>	MOR001-FLO-CON-ENV-FIG-1180	<b>Rev</b>	01
<b>Alt Doc No</b>	PC1165-RHD-ES-XX-DG-Z-0018		
<b>Document Status</b>	Approved for Use	<b>Doc Date</b>	May 2024
<b>PINS Doc Ref</b>	5.3.18.8	<b>APFP Ref</b>	5(2)(a)

<b>Rev</b>	<b>Date</b>	<b>Doc Status</b>	<b>Originator</b>	<b>Reviewer</b>	<b>Approver</b>	<b>Modifications</b>
01	May 2024	Approved for Use	Royal HaskoningDHV	Morecambe Offshore Windfarm Ltd	Morecambe Offshore Windfarm Ltd	n/a





Viewpoint Location Plan Baseline Panorama (90 Degree View)  
Scale: 1:200,000



Viewpoint Location Plan (53.5 Degree View)  
Scale: 1:50,000

**Legend:**

- Morecambe Offshore Wind Farm - Assumed WTG locations (30 x BT 310m(HAT))
- ▲ 90 Degree Field of View
- ▼ 53.5 Degree Field of View
- 10km Radii
- 60km Study Area
- Morecambe Offshore Windfarm Site
- Cumulative Wind Farms Status
  - Operational
  - Under Construction
  - Consented
  - Application
  - Scoping
  - Pre-Application

© Crown copyright and database rights (2023) Ordnance Survey 0100031673.

Report:  
Morecambe Offshore Windfarm: Generation Assets Environmental Statement

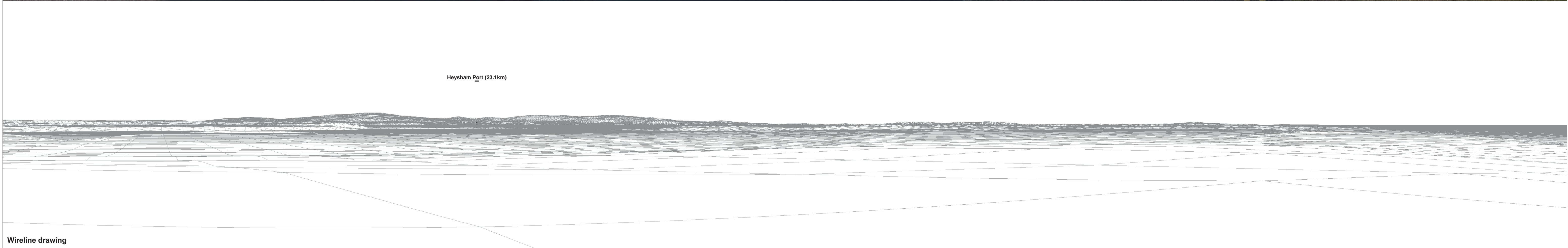
Title:  
Viewpoint 5:  
Walney Island (Biggar Bank Road)

Figure: 18.28a | Drawing No: 211609

Revision:	Date:	Drawn:	Checked:	Size:	Scale:
P02	25/09/2023	RA	SM	A3	1:50,000

Co-ordinate system: WGS 1984 UTM Zone 30N





<b>OS reference:</b>	317848 E 467524 N	<b>Horizontal field of view:</b>	90° (cylindrical projection)	<b>Camera:</b>	Canon EOS 6D
<b>Eye level:</b>	14.49 m AOD	<b>Principal distance</b>	522 mm	<b>Lens:</b>	EF50mm f/1.4 USM
<b>Direction of view:</b>	126°			<b>Camera height:</b>	1.5 m AGL
<b>Nearest turbine:</b>	33.971 km			<b>Date and time:</b>	23/06/2022, 06:28

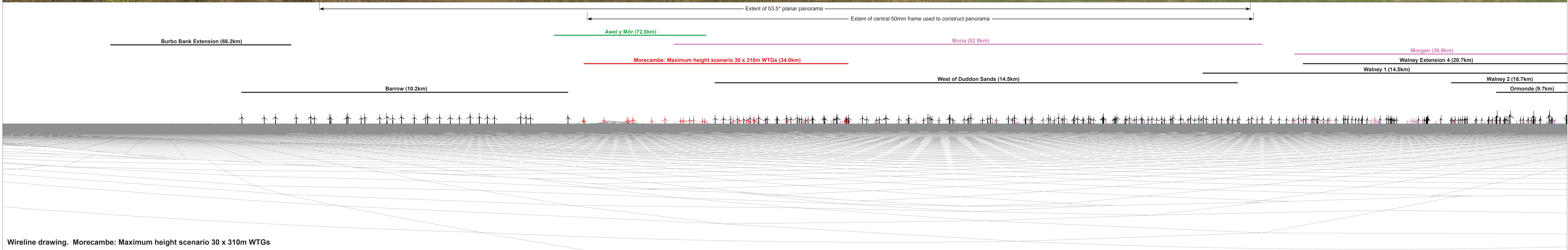
**Figure: 18:28b**  
**Viewpoint 5: Walney Island (Biggar Bank Road)**





Baseline photograph

This image provides landscape and visual context only

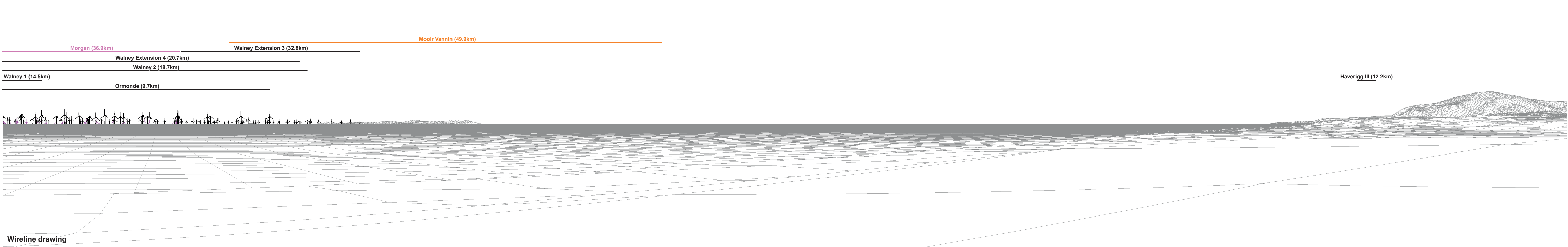


Wireline drawing. Morecambe: Maximum height scenario 30 x 310m WTGs

<b>OS reference:</b>	317848 E 467524 N	<b>Horizontal field of view:</b>	90° (cylindrical projection)	<b>Camera:</b>	Canon EOS 6D
<b>Eye level:</b>	14.49 m AOD	<b>Principal distance</b>	522 mm	<b>Lens:</b>	EF50mm f/1.4 USM
<b>Direction of view:</b>	216°			<b>Camera height:</b>	1.5 m AGL
<b>Nearest turbine:</b>	33.971 km			<b>Date and time:</b>	23/06/2022, 06:28

Figure: 18:28c  
Viewpoint 5: Walney Island (Biggar Bank Road)

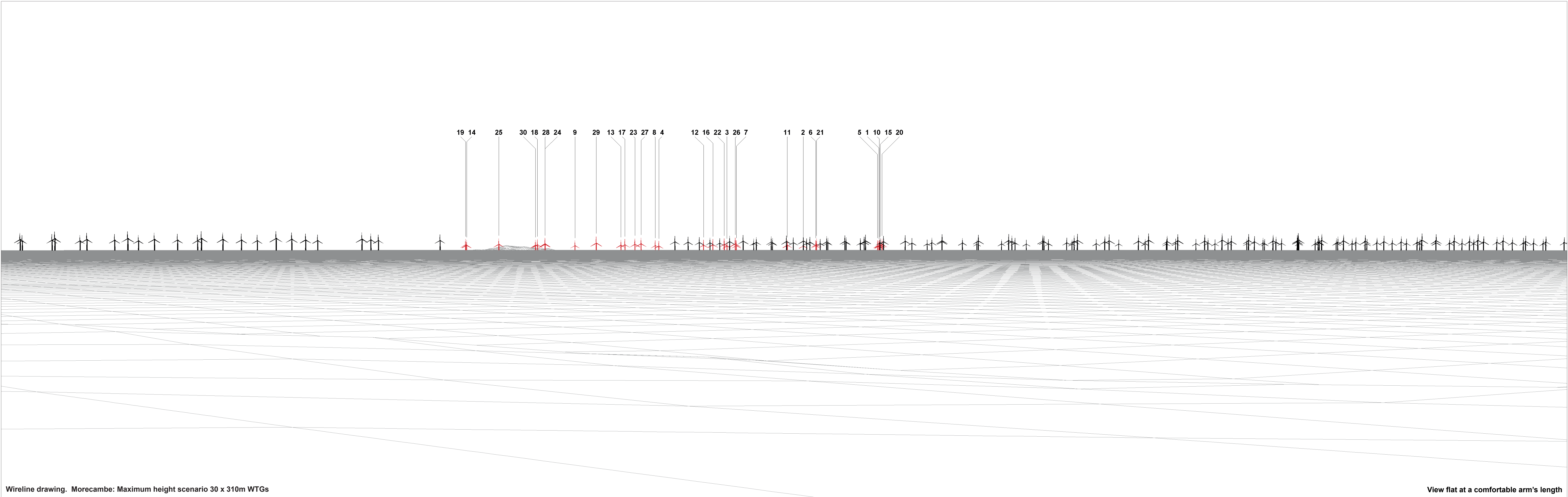




<b>OS reference:</b>	317848 E 467524 N	<b>Horizontal field of view:</b>	90° (cylindrical projection)	<b>Camera:</b>	Canon EOS 6D
<b>Eye level:</b>	14.49 m AOD	<b>Principal distance:</b>	522 mm	<b>Lens:</b>	EF50mm f/1.4 USM
<b>Direction of view:</b>	306°	<b>Camera height:</b>	1.5 m AGL	<b>Date and time:</b>	23/06/2022, 06:28
<b>Nearest turbine:</b>	33.971 km				

**Figure: 18:28d**  
**Viewpoint 5: Walney Island (Biggar Bank Road)**





Wireline drawing. Morecambe: Maximum height scenario 30 x 310m WTGs

View flat at a comfortable arm's length

<b>OS reference:</b>	317848 E 467524 N	<b>Horizontal field of view:</b>	53.5° (planar projection)	<b>Camera:</b>	Canon EOS 6D
<b>Eye level:</b>	14.49 m AOD	<b>Principal distance:</b>	812.5 mm	<b>Lens:</b>	EF50mm f/1.4 USM
<b>Direction of view:</b>	216°	<b>Paper size:</b>	841 x 297 mm (half A1)	<b>Camera height:</b>	1.5 m AGL
<b>Nearest turbine:</b>	33.971 km	<b>Correct printed image size:</b>	820 x 260 mm	<b>Date and time:</b>	23/06/2022, 06:28

**Figure: 18:28e**  
Viewpoint 5: Walney Island (Biggar Bank Road)





Baseline Photograph (offshore operational turbines have been rendered in this view)

View flat at a comfortable arm's length

<b>OS reference:</b>	317848 E 467524 N	<b>Horizontal field of view:</b>	53.5° (planar projection)	<b>Camera:</b>	Canon EOS 6D
<b>Eye level:</b>	14.49 m AOD	<b>Principal distance:</b>	812.5 mm	<b>Lens:</b>	EF50mm f/1.4 USM
<b>Direction of view:</b>	216°	<b>Paper size:</b>	841 x 297 mm (half A1)	<b>Camera height:</b>	1.5 m AGL
<b>Nearest turbine:</b>	33.971 km	<b>Correct printed image size:</b>	820 x 260 mm	<b>Date and time:</b>	23/06/2022, 06:28

**Figure: 18:28f**  
**Viewpoint 5: Walney Island (Biggar Bank Road)**





Photomontage

View flat at a comfortable arm's length

<b>OS reference:</b> 317848 E 467524 N	<b>Horizontal field of view:</b> 53.5° (planar projection)	<b>Camera:</b> Canon EOS 6D
<b>Eye level:</b> 14.49 m AOD	<b>Principal distance:</b> 812.5 mm	<b>Lens:</b> EF50mm f/1.4 USM
<b>Direction of view:</b> 216°	<b>Paper size:</b> 841 x 297 mm (half A1)	<b>Camera height:</b> 1.5 m AGL
<b>Nearest turbine:</b> 33.971 km	<b>Correct printed image size:</b> 820 x 260 mm	<b>Date and time:</b> 23/06/2022, 06:28

**Figure: 18:28g**  
**Viewpoint 5: Walney Island (Biggar Bank Road)**